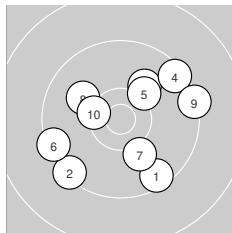
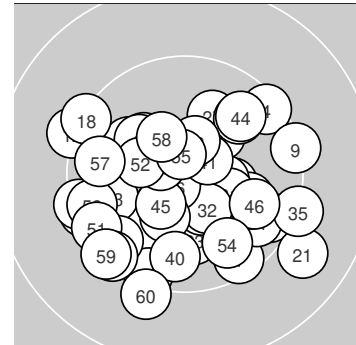
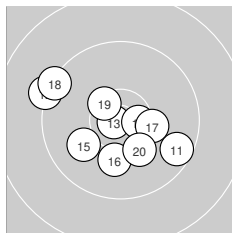


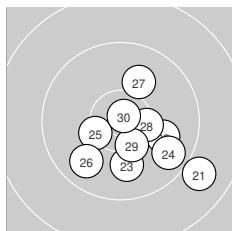
Ergebnis: **599.2** (573)
 Serien: 98.1 100.8 100.5 100.3 100.7 98.8
 Zähler: 33 27 0 0 0 0 0 0 0
 Innenzehner: 19
 Weitestе: 1585 (21.), 1411 (60.), 1345 (12.)
 beste Teiler: 101.8 (30.), 118.4 (13.), 169.0 (36.)
 Trefferlage: 0.63 mm links, 1.81 mm tief
 Streuwert: 5.94, horizontal: 6.62, vertikal: 5.17



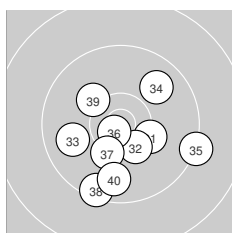
Serie 1:
 9.6 ↘ 9.4 ↙ 10.1 ↗ 9.5 ↗ 10.2 ↗
 9.4 ↙ 10.1 ↘ 10.0 ↖ 9.4 → 10.4 *
 beste Teiler: 463.4 (10.), 585.3 (5.), 669.0 (7.)
 Trefferlage: 0.80 mm rechts, 0.36 mm tief
 Streuwert: 7.12, horizontal: 7.94, vertikal: 6.19



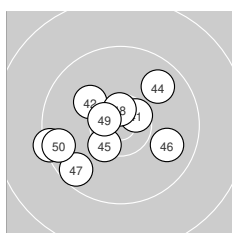
Serie 2:
 9.6 ↘ 9.3 ↖ 10.8 * 10.6 * 10.0 ↙
 10.1 ↓ 10.3 → 9.4 ↖ 10.5 * 10.2 ↘
 beste Teiler: 118.4 (13.), 298.5 (14.), 390.3 (19.)
 Trefferlage: 1.39 mm links, 0.85 mm tief
 Streuwert: 5.85, horizontal: 7.04, vertikal: 4.35



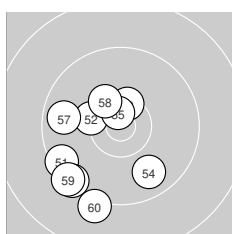
Serie 3:
 9.0 ↘ 10.0 ↘ 10.0 ↓ 9.7 ↘ 10.4 *
 9.8 ↙ 10.0 ↗ 10.4 * 10.4 * 10.8 *
 beste Teiler: 101.8 (30.), 441.6 (28.), 443.7 (29.)
 Trefferlage: 2.92 mm rechts, 2.99 mm tief
 Streuwert: 5.13, horizontal: 5.65, vertikal: 4.54



Serie 4:
 10.3 ↘ 10.4 * 9.9 ↙ 9.9 ↗ 9.3 →
 10.7 * 10.3 * 9.5 ↓ 10.2 ↖ 9.8 ↓
 beste Teiler: 169.0 (36.), 457.3 (32.), 528.3 (37.)
 Trefferlage: 0.50 mm rechts, 2.88 mm tief
 Streuwert: 5.68, horizontal: 6.10, vertikal: 5.23



Serie 5:
 10.6 * 10.2 ↖ 9.4 ↙ 9.8 ↗ 10.4 *
 9.9 ↘ 9.6 ↙ 10.6 * 10.6 * 9.6 ↙
 beste Teiler: 263.6 (48.), 288.1 (49.), 302.1 (41.)
 Trefferlage: 2.38 mm links, 0.53 mm tief
 Streuwert: 5.58, horizontal: 6.62, vertikal: 4.28



Serie 6:
 9.5 ↙ 10.3 * 10.5 * 9.8 ↘ 10.7 *
 9.4 ↙ 9.7 ← 10.3 * 9.4 ↙ 9.2 ↓
 beste Teiler: 225.3 (55.), 388.4 (53.), 490.5 (58.)
 Trefferlage: 4.28 mm links, 3.23 mm tief
 Streuwert: 5.76, horizontal: 4.97, vertikal: 6.44

